

# Heaven and Earth - Chant No. 1

"Similar to Nebo i Zem'la"

St. Michael's, Binghamton, NY

Traditional Plain Chant

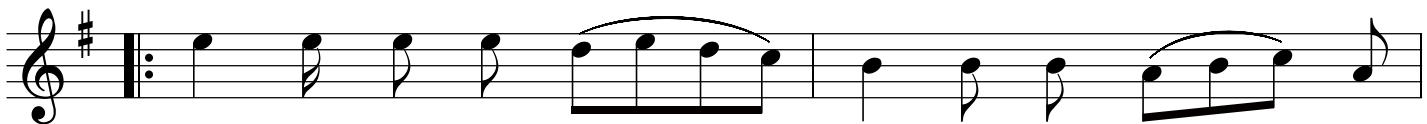


1a Hea - ven and earth,\_\_\_\_ Hea - ven and earth,\_\_\_\_  
1b An - gels and peo - ple, An - gels and peo - ple,  
2a Come and a - dore Him, Come and a - dore Him,  
2b Ma - ry the Vir - gin, Ma - ry the Vir - gin,



1a now sing\_\_\_\_ in\_\_\_\_ tri\_\_\_\_ - umph.  
1b Join in\_\_\_\_ ce - le - bra\_\_\_\_ - tion.  
2a Ly - ing\_\_\_\_ in a man\_\_\_\_ - ger.  
2b Keeps watch\_\_\_\_ o'er the Sa\_\_\_\_ - vior.

## Refrain



Christ the Lord is Born,\_\_\_\_ come and be - hold\_\_\_\_ Him,



choirs of an - gels sing - ing, wise\_\_\_\_ men ap - pear - ing,



Christ they are greet - ing, shep - herds are re - tell - ing,



joy - ful - ly the won - drous sto\_\_\_\_ - ry.

*Sing 1a and 1b then sing refrain 2 times.*

*Sing 2a and 2b then sing refrain 2 times.*